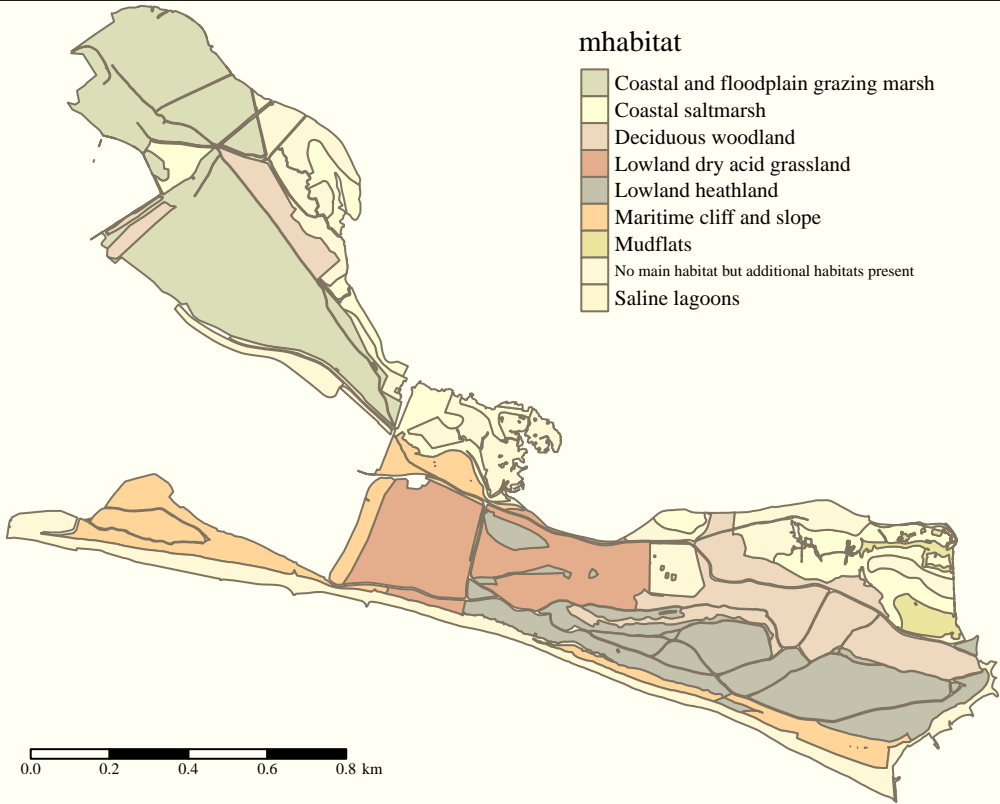


mhabitat

- Coastal and floodplain grazing marsh
- Coastal saltmarsh
- Deciduous woodland
- Lowland dry acid grassland
- Lowland heathland
- Maritime cliff and slope
- Mudflats
- No main habitat but additional habitats present
- Saline lagoons



0.0 0.2 0.4 0.6 0.8 km